

## RENVILLE COUNTY, MN MEETS MOBILE GIS NEEDS WITH ARCGIS ONLINE

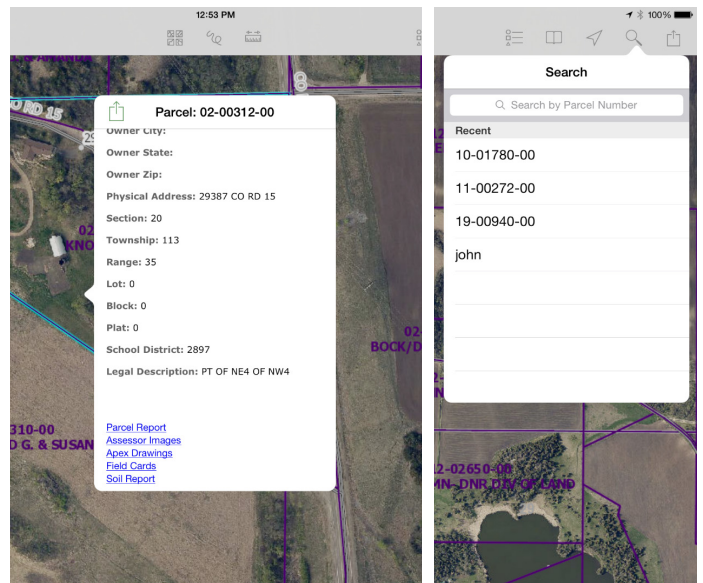
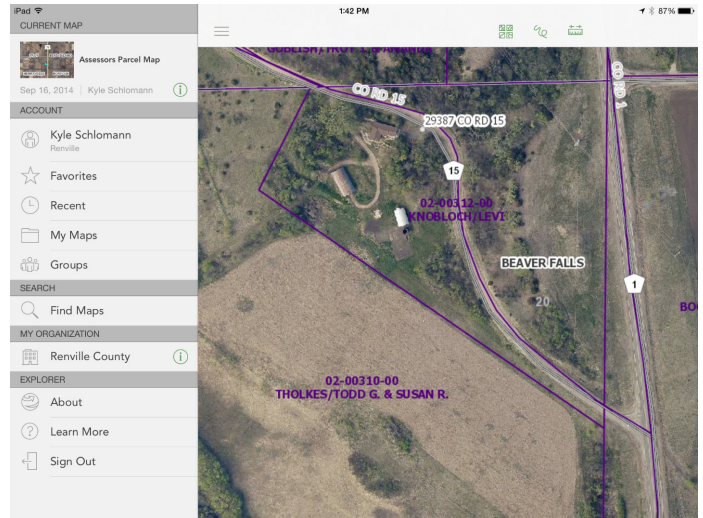
Renville County, MN, turned to Pro-West, with whom it had partnered on GIS projects for ten years, to deliver mobile GIS to users in the field.

Pro-West has worked with Renville County for almost a decade. Having originally developed parcels for the County, Pro-West has since provided extensive GIS services including:

- GPS data collection
- Web-based parcel apps
- Ancillary data layer development, for example school districts, zoning, voting precincts, parks
- GIS training
- Technical support
- Ongoing parcel maintenance services
- GIS web-based application development
- Desktop soils toolbar development
- ArcGIS Online set-up and configuration for mobile-ready GIS application
- Consulting services

The County Assessor's staff required access to GIS maps and a range of other business systems – including field cards, house photos, structure sketches, computer aided mass appraisal software, and tax information – while in the field performing property assessments. Prior to working with Pro-West, Renville County's field staff did not have access to mobile devices.

Pro-West and Renville have a well-established relationship, having partnered on a series of GIS projects over the past decade following an initial recommendation by another Minnesota County, supported by Pro-West's track record of successfully implementing ArcGIS Online, iPads, and mobile apps for Local Government Assessors' offices.



### TECHNOLOGY

- ArcGIS Online
- Explorer for ArcGIS on iOS (iPads)
- ArcGIS for Server



## THE SOLUTION

Pro-West worked with the County to identify its mobile needs, coming to the conclusion that the right solution would be provided by deploying Explorer for ArcGIS and ArcGIS Online. The solution also included leveraging the County's access to ArcGIS for Server.

Pro-West helped the County set up and maintain its ArcGIS Online Organization Account including branding, user management, organization management, group management and the basics of building and sharing maps and apps.

With the Pro-West solution in place, Renville County employees were able to access all required materials while in the field. Having access to this information in the field ensured staff were informed of all aspects of the property prior to approaching and accessing it. Information available in any of the business systems was readily available no matter where the staff was, whether in the field or the office.

## FUTURE DEVELOPMENTS

The success of the solution has led the County to begin leveraging other capabilities of the Explorer application including sketching notes on the map and sharing the sketches and maps via email.

