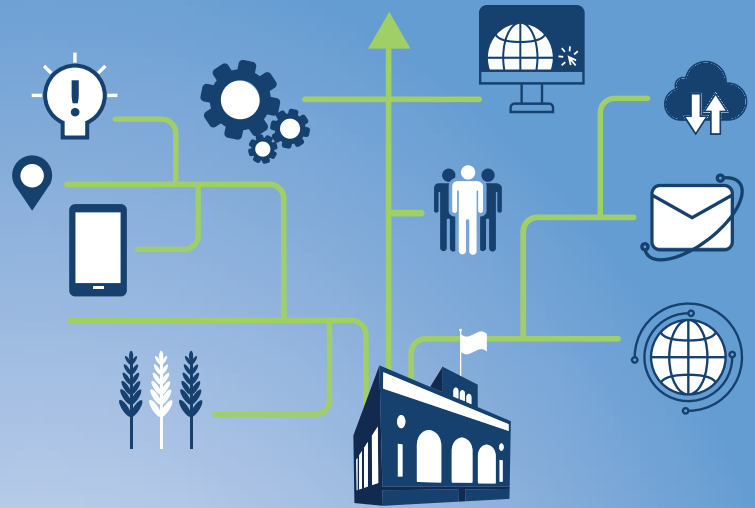


# PROWEST & Associates

## LOCAL GOVERNMENT PACKAGES From Pro-West & Associates

For many organizations, the most efficient way to implement a location technology solution to fit their needs is with an all-inclusive package. Choose from Pro-West's collection of ready-to-go packages, each containing a unique blend of Pro-West services, to deliver value through location intelligence.



### BLOCK SUPPORT PACKAGES

**Value:** Need a little or a lot of support? Need assistance that spans multiple types of services, such as data, enterprise, solutions and integration? Want on-demand support from technical leaders? This package may be the best option to meet your needs.

**Includes:** "Blocks" of GIS professional services support | Different levels available from 20-160 hours | Applicable to any service offered by Pro-West | Valid for 1 year | Cost-effective pricing | One line item for all GIS services you may need | Options to "buy up" or extend packages



### EQUITABLE PROPERTY VALUE HUB PACKAGE

**Value:** Real-time access to solutions and data that answer common property and tax distribution questions. Drive citizen engagement and streamline the assessment appeals process!

**Includes:** Configuration of the following Esri-based solutions: Equitable Property Value Hub and solutions | Solution configuration and support

### PARCEL FABRIC IMPLEMENTATION PACKAGE

**Value:** Stay ahead by deploying the Parcel Fabric in ArcGIS Pro - whatever your current method of managing parcel data. Enhance citizen engagement and information accessibility.

**Includes:** Data analysis | System architecture analysis | Data migration | Training and support



### ADDRESS OUTREACH HUB

**Value:** Support diverse location and emergency routing needs through community collaboration to improve addressing and road information.



**Includes:** Configuration of the following Esri-based solutions: Address Outreach Manager Hub site | Address Viewer | My Emergency Services | Address Request and Data Manager | Address Crowdsourcing and Data Manager



### LAND USE OUTREACH HUB PACKAGE

**Value:** Share construction activity, land use and zoning regulations to generate awareness about development activity

**Includes:** Land Use Outreach Hub site | Land Use Inquiry app | Floodplain Inquiry Solution | Construction Activity Tracker | Public Comment solution

### ROADS & HIGHWAYS PACKAGE

**Value:** Share information with the public about construction, closures, or related data on roads and highways.

**Includes:** Road Closures solution | Current and Planned Construction solution | Bridge Viewer solution | Open Data: bridges, construction, roads and road closures | For Hub Premium users: community calendar and community initiative sign-up



### ENTERPRISE GIS JUMPSTART

**Value:** Provide support with modern sustainable infrastructure with the power to standardize and streamline location technology and workflows, bring location intelligence to all departments, enhance citizen engagement, and share valuable information.

**Includes:** System architecture analysis, design and implementation | Training and technical support | Ongoing management and maintenance



### INFRASTRUCTURE CHECK-UP

**Value:** Make sure your system allows you to take full advantage of GIS capabilities, offers room for growth, and can integrate with other critical business systems.

**Includes:** Performance review | Security review | Strategies for scaling | Cloud strategies | Upgrade strategies | System integration | Training and support



### NG9-1-1 READINESS PACKAGE

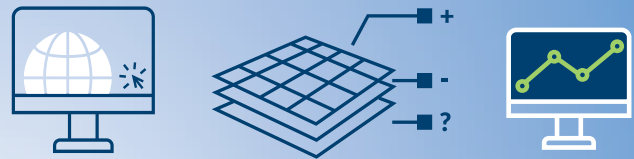
**Value:** Ensure your organization's 911 GIS data meets readiness deadlines and/or data maintenance requirements, no matter what stage of the NG9-1-1 process you have reached.

**Includes:** Strategic planning (gap analysis, data quality reports, and more) | Remediation of data quality issues | Advice on requirements of the state and other systems for 911 | Creation of required datasets | Quality assurance/quality control plans | Custom training

### END-TO-END GIS SERVICE PACKAGES

**Value:** For organizations that need to supplement their GIS teams, or that don't have in-house GIS staff, fill the gap with end-to-end GIS services. Benefit from expertise including application development, solution configuration, system integration, and data services.

**Includes:** Support to define goals and required services | Defined time frame and budget to meet goals | Unique set of services built around your GIS goals | Support from experts spanning the GIS spectrum



### ASSET MANAGEMENT PACKAGE

**Value:** Inventory assets and keep information up-to-date by providing easy-to-use interactive maps and apps for office and field staff. Quickly deploy ArcGIS Solutions to record, update and track information about your assets in real time, on a standard platform.

**Includes:** Esri software licensing, configuration of 2 ArcGIS Online solutions, Asset Management Hub site, data upload for chosen solutions, training and professional services support



### PUBLIC OUTREACH PACKAGE

**Value:** Engage with citizens by providing up-to-date information in a way that is easy to access and understand. Efficiently share information on evolving situations, reduce in-person requests for property records, and much more with easy-to-use, hosted, mobile-friendly web maps and apps.

**Includes:** Esri software licensing, configuration of 2 ArcGIS Online solutions, Citizen Engagement Hub site, data upload for chosen solutions, training and professional services support



**RECORDERS AND LAND RECORDS PROFESSIONALS**

*Analyze your data for accuracy, create an environment for efficient maintenance, take the right training and implement the right web applications to get valuable information to those who need it, in ways it is easily accessed and understood.*

**Explore these packages if you want to:** Enhance public trust, confidence and transparency | Minimize appeals | Respond to market conditions | Deliver tax roll on time and accurately | Communicate value notices to the public | Eliminate/minimize data quality issues and silos | Modernize aging business systems | Attract and retain talented staff

**Includes: Data Management & System Integration:** Parcel Fabric Implementation Package including transition to ArcGIS Pro | Business system integration with Tax, CAMA, document imaging, payment systems and more! | Internal management of Equitable Property Value Hub **Citizen Engagement:** Equitable Property Value Hub Package | Land Use Outreach Hub Package **Support:** Block support packages | End-to-End GIS Service Packages



**IT AND ENTERPRISE SYSTEMS**

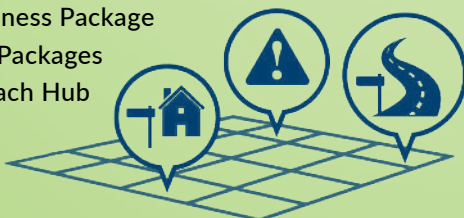
*Responsible for managing the infrastructure that supports your organization's GIS? Evaluate what you currently have, get up and running efficiently with the right system architecture, and benefit from ongoing support and maintenance that allows you to focus on your core responsibilities. Packages include:*

- ✓ Block Support Packages
- ✓ Enterprise GIS Jumpstart
- ✓ Infrastructure Check-Up
- ✓ End-to-End GIS Service Packages

**EMERGENCY MANAGERS**

*Get critical data in order, implement the right processes to maintain it efficiently, and implement solutions that better equip your organization to respond effectively. Packages include:*

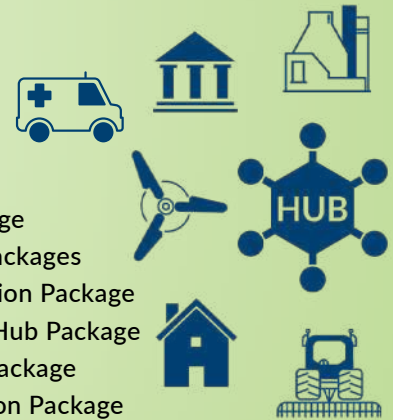
- ✓ NG9-1-1 Readiness Package
- ✓ Block Support Packages
- ✓ Address Outreach Hub



**GIS TEAMS**

*Add to your capabilities and capacity with a wide range of packages to grow your organization's location strategy, enhance the services you provide to staff and external users, get the most from your investment in GIS software, and have the confidence that support is on hand when you need it most. Packages include:*

- ✓ Block Support Packages
- ✓ Address Outreach Hub
- ✓ Enterprise GIS Jumpstart
- ✓ Infrastructure Check-Up
- ✓ NG9-1-1 Readiness Package
- ✓ End-to-End GIS Service Packages
- ✓ Parcel Fabric Implementation Package
- ✓ Equitable Property Value Hub Package
- ✓ Land Use Outreach Hub Package
- ✓ ArcGIS Hub Implementation Package



**PUBLIC WORKS**

*Transform your asset management and maintenance workflows by leveraging GIS solutions. Migrate processes from paper to digital formats, empower field workers with asset data at their fingertips and improve efficiency throughout the department. Packages include:*

- ✓ Block Support Packages
- ✓ Asset Management Package
- ✓ Roads & Highways Package
- ✓ Citizen Engagement Package

