

Introduction to ArcGIS Monitor

Lucas Scharenbroich | Pro-West & Associates, Inc.
lscharen@prowestgis.com
@ljscharen

What is ArcGIS Monitor?

ArcGIS Monitor is a tool uniquely tailored to monitor the health of your ArcGIS implementations throughout the lifecycle. It provides awareness of system usage and performance, helping you get the most from your GIS and IT investment.



Monitor all system tiers



See alerts & notifications



Use reports & metrics

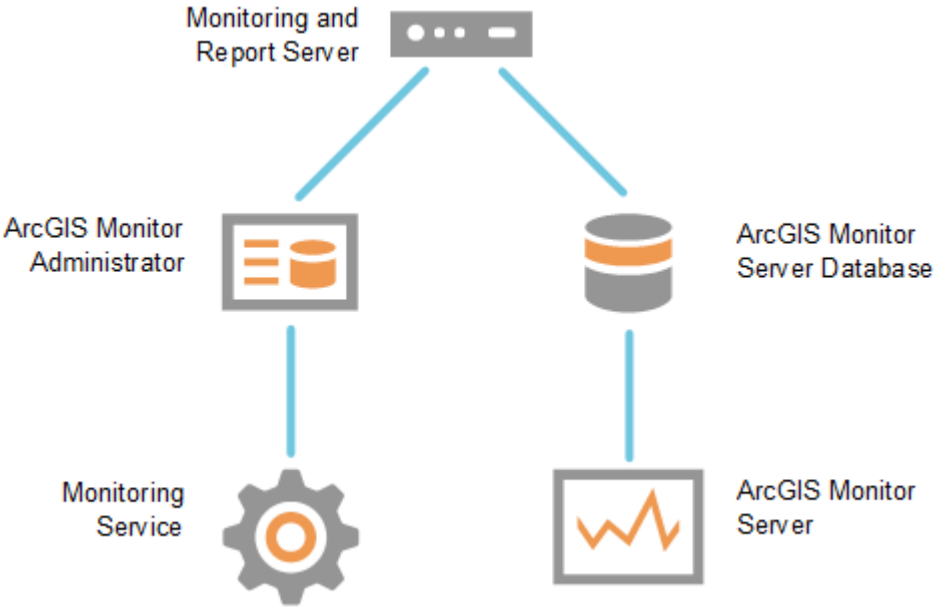
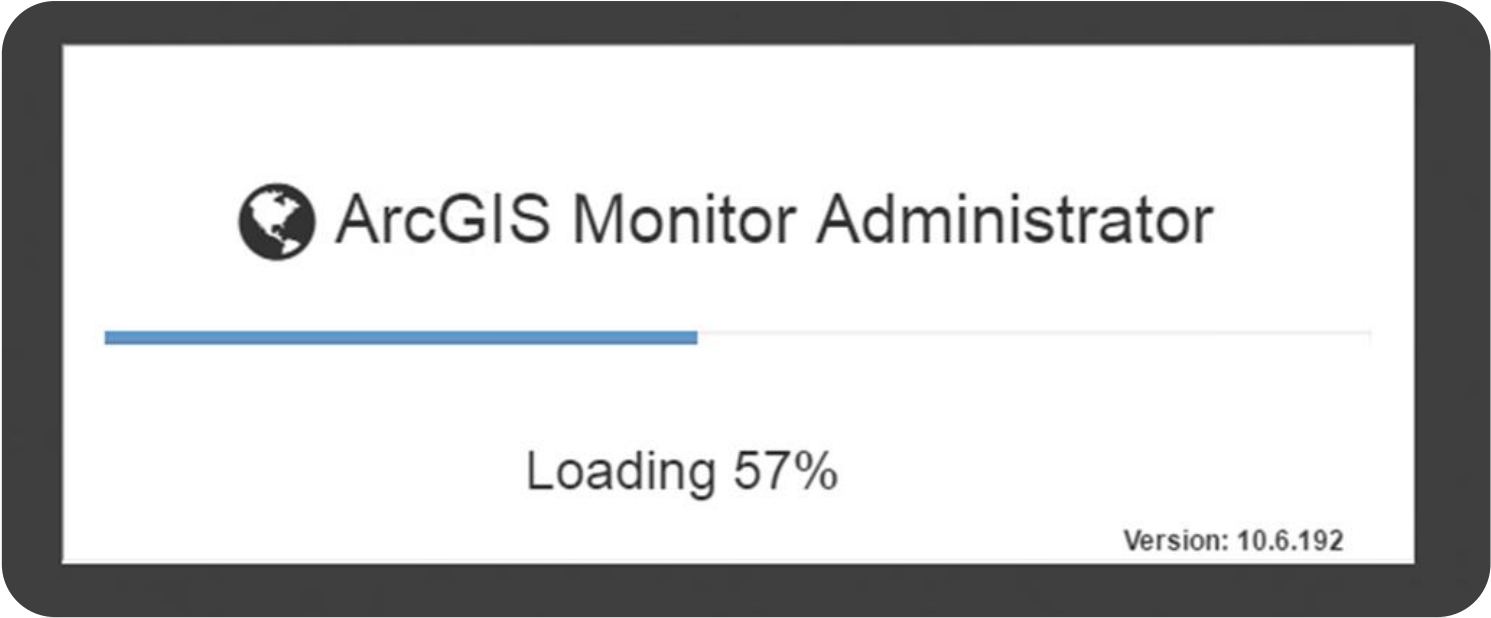
How do I get it?

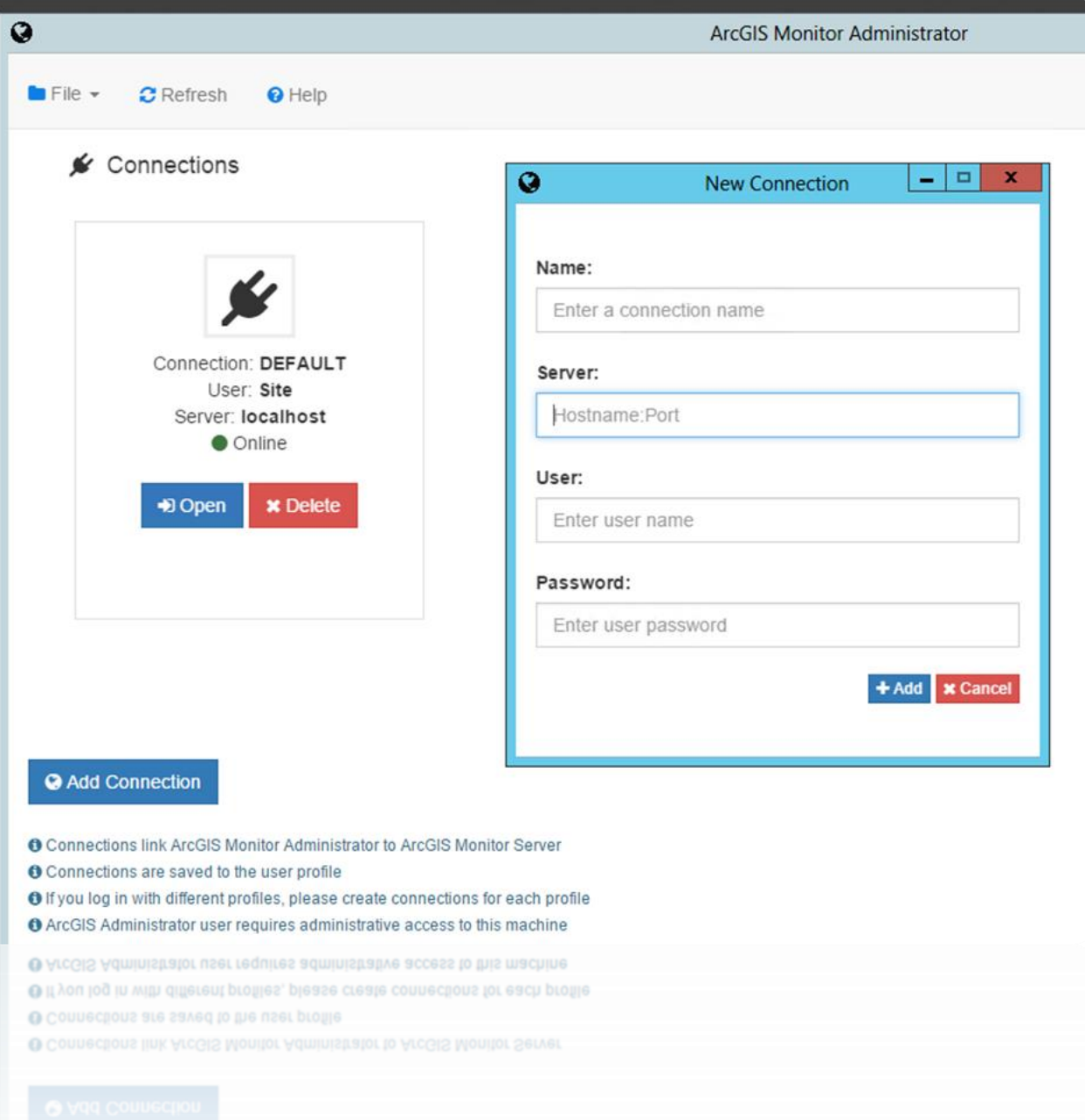


The screenshot shows the My Esri user interface. At the top, there is a navigation bar with 'My Esri' on the left and 'Dashboard', 'My Profile', and 'My Organizations' (with a help icon) on the right. Below this is a secondary navigation bar with links for 'Overview', 'Transactions', 'Licensing', 'Downloads', 'Training', 'Support', 'Events', and 'Reports'. The main content area has a left sidebar with 'Downloads', 'Products', and 'Product Components'. The main content area displays the breadcrumb 'My Esri / My Organizations / Products', the title 'ArcGIS Enterprise (Windows)', and a note: 'Software Patches: Patches may be needed prior to using your software.'

ArcGIS Monitor (Windows) ArcGIS Enterprise (Windows)	Additional Information	192.43 MB	Download
---	--	-----------	--------------------------

Setup



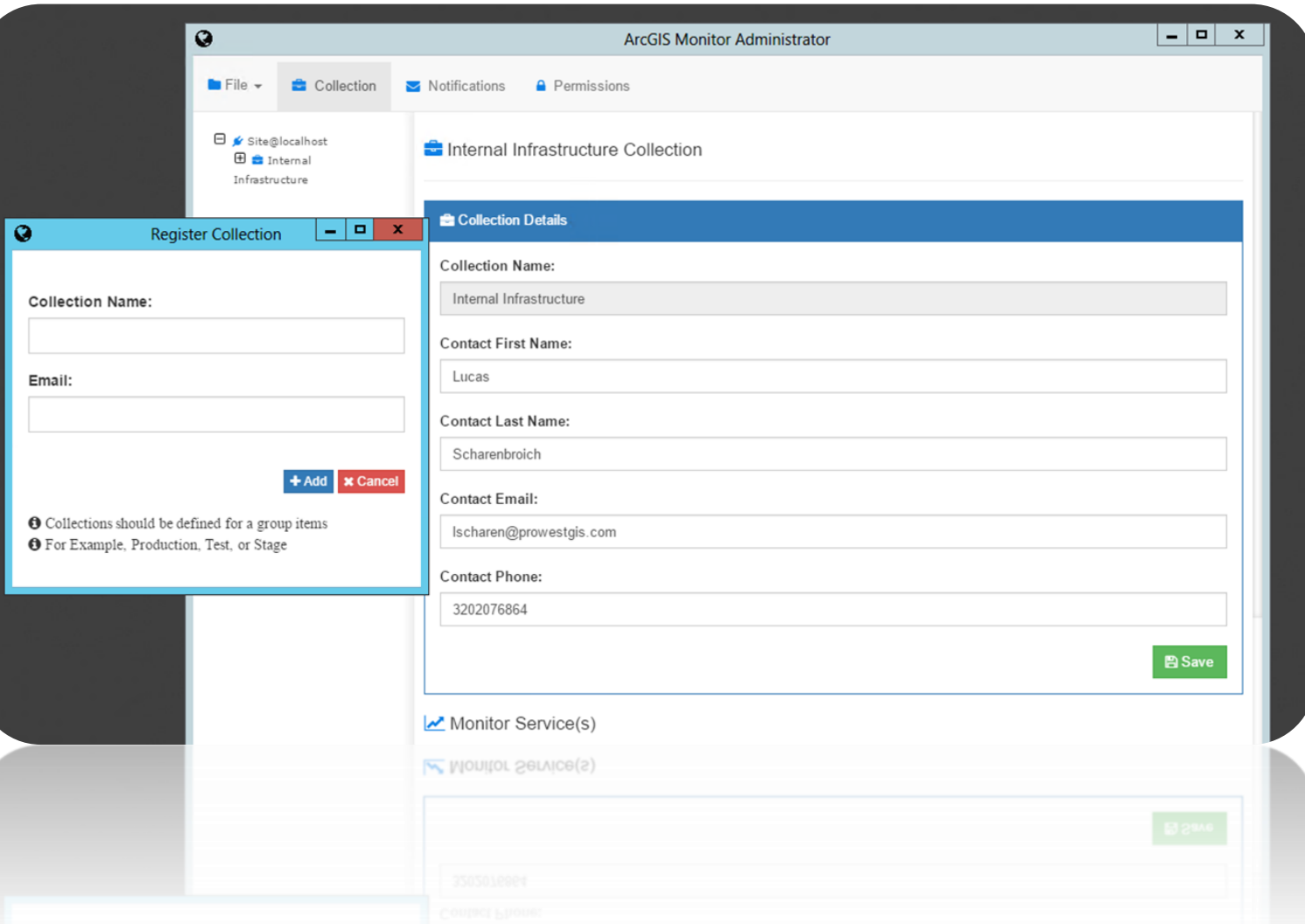


Setup

- Create a connection to ArcGIS Monitor
- Register a Collection
- Add a monitor service

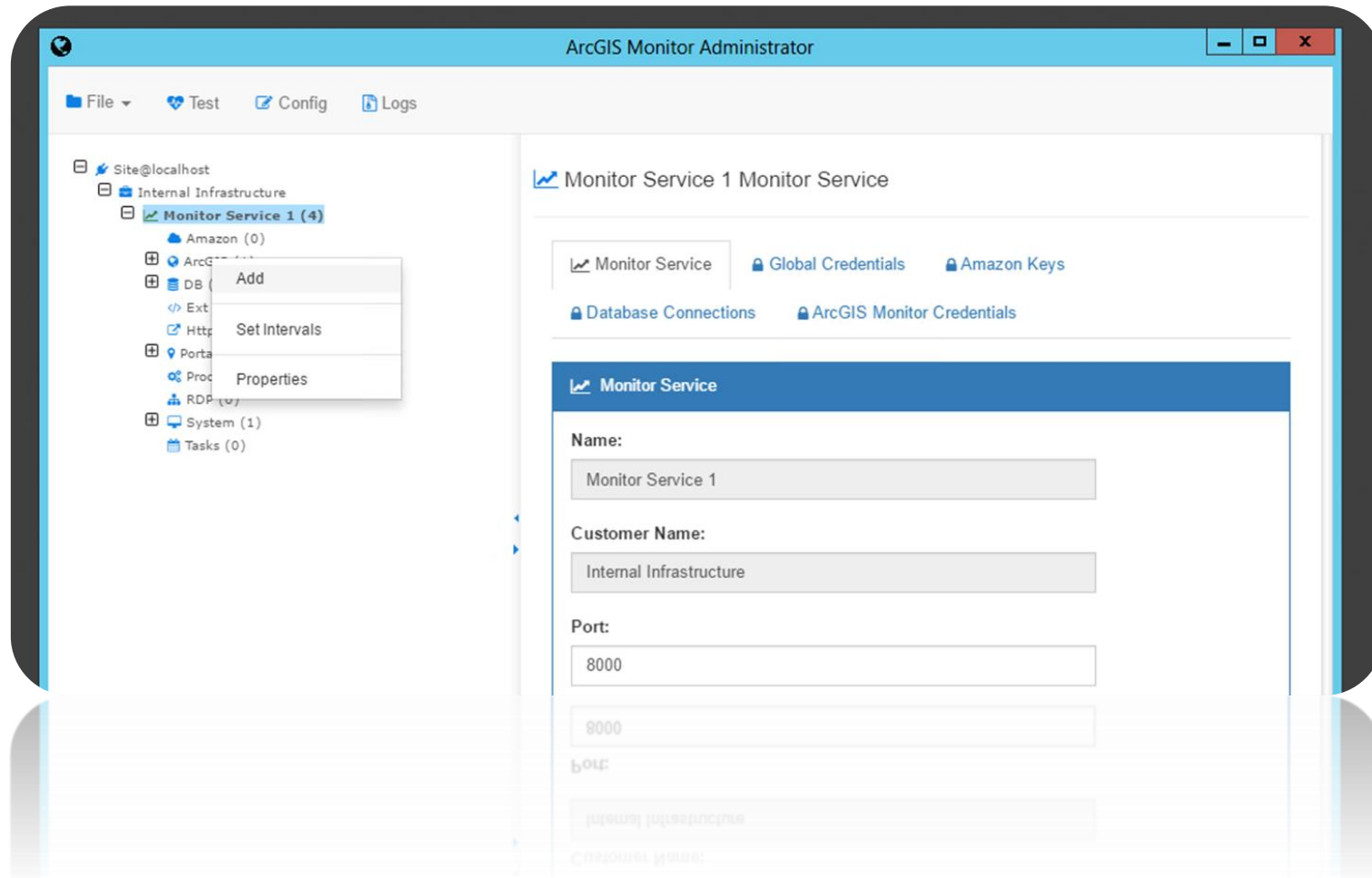
Setup

- Create a connection to ArcGIS Monitor
- **Register a Collection**
- Add a monitor service



Setup

- Create a connection to ArcGIS Monitor
- Register a Collection
- **Add a monitor service**



Usage

- Internal Infrastructure
 - ArcGIS (1)
 - 10.6 (35)**
 - Collector (4)
 - DB (1)
 - Portal (1)
 - System (1)

Collection Status

Alerting ▾	Monitor ▾	Name ▾	Type ▾	Interval ▾	Last Update ▾
✔	✔	10.6	ArcGIS	900	4/9/2018, 11:55:59 AM

Services	Capabilities	Pooling	Usage	Errors	Site	License		
Alerting ▾	Folder ▾	Service ▾	Cluster ▾	Nodes ▾	State ▾	Check ▾	Min Per Node ▾	Max Per Node ▾
✔	Fargo	FargoParkDistrictEditLayers	default	1	Started	✔	1.000	2.000
✔	Fargo	FargoParkDistrict	default	1	Started	✔	1.000	2.000
✔	Roseau	ExportWebMap	default	1	Started	✔	1.000	2.000
✔	Roseau	LidarHillshade	default	1	Started	✔	1.000	2.000
✔	Roseau	Roseau_Basemap_Web_Merc	default	1	Started	✔	1.000	2.000
✔	Roseau	Roseau_NAIP2010	default	1	Started	✔	1.000	2.000
✔	Roseau	Roseau_Operational_DataJoin_Web_Merc	default	1	Started	✔	1.000	2.000
✔	Roseau	Roseau_Tillable	default	1	Started	✔	1.000	2.000
✔	Roseau	RoseauContours	default	1	Started	✔	1.000	2.000
✔	Roseau	Roseau_Tillable_Feature	default	1	Started	✔	1.000	2.000
✔	Roseau	SoilReport	default	1	Started	✔	1.000	2.000
✔	System	CachingControllers	default	1	Started	✔	0.000	3.000
✔	System	CachingTools	default	1	Started	✔	0.000	3.000
✔	System	CachingToolsEx	default	1	Started	✔	0.000	3.000
✔	System	DistributedWorker	default	1	Stopped	✔	1.000	1.000
✔	System	GeoAnalyticsManagement	default	1	Stopped	✔	1.000	1.000

The Good

Provides Comprehensive Monitoring

Very Configurable

Reusable Credentials

Ability to Test Connection



The “Gotchas”

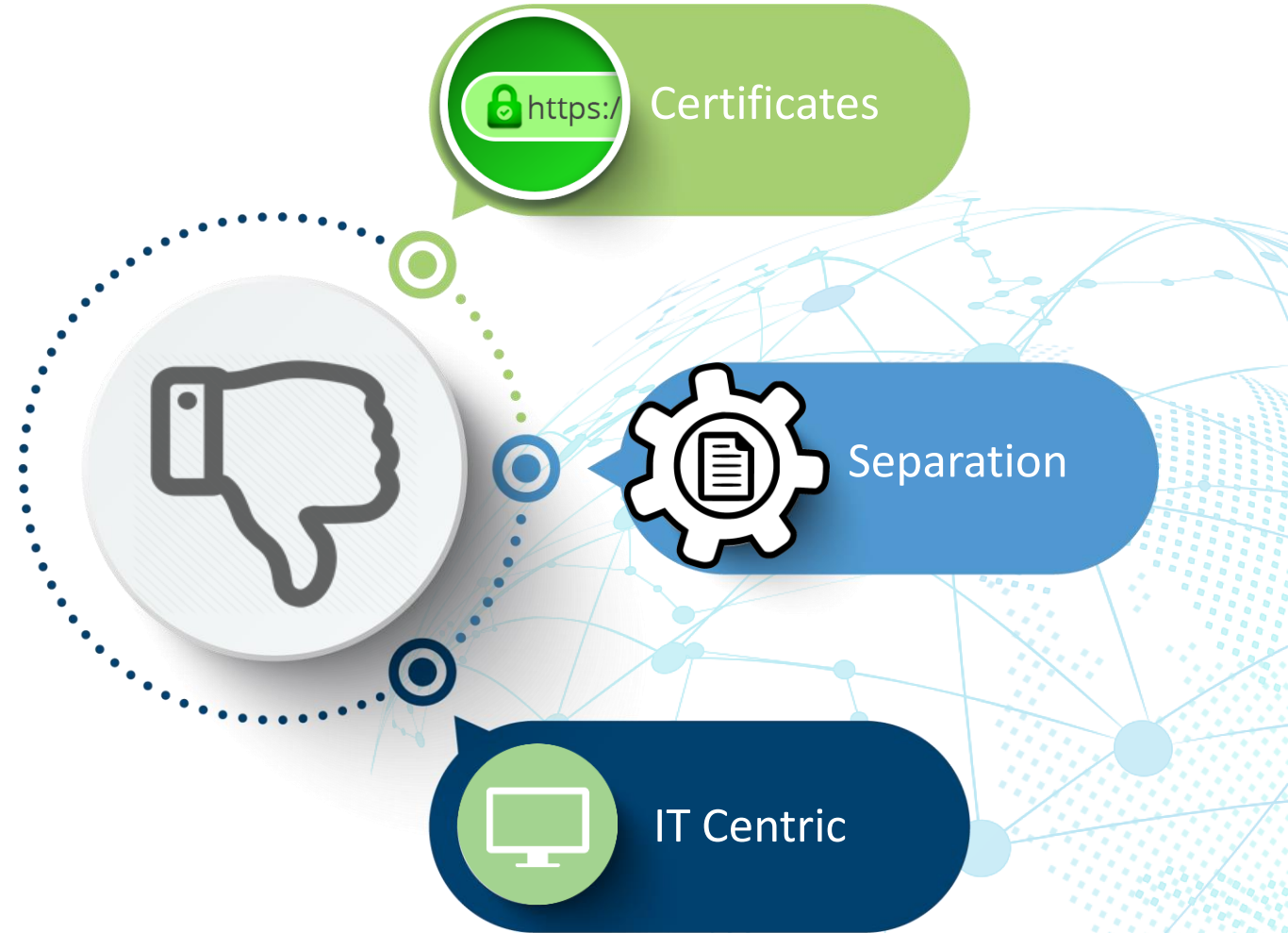
SSL Certificates in PEM format, not PFX

Multiple Places to Manage Content

Need to use Monitor Administrator for set up
Use a Web interface for Viewing

This is an **IT Tool**, not a **GIS Tool**

Set Expectations
Needs appropriate Care and Feeding



Thank You!

Lucas Scharenbroich | Pro-West & Associates
lscharen@prowestgis.com
@ljscharen

