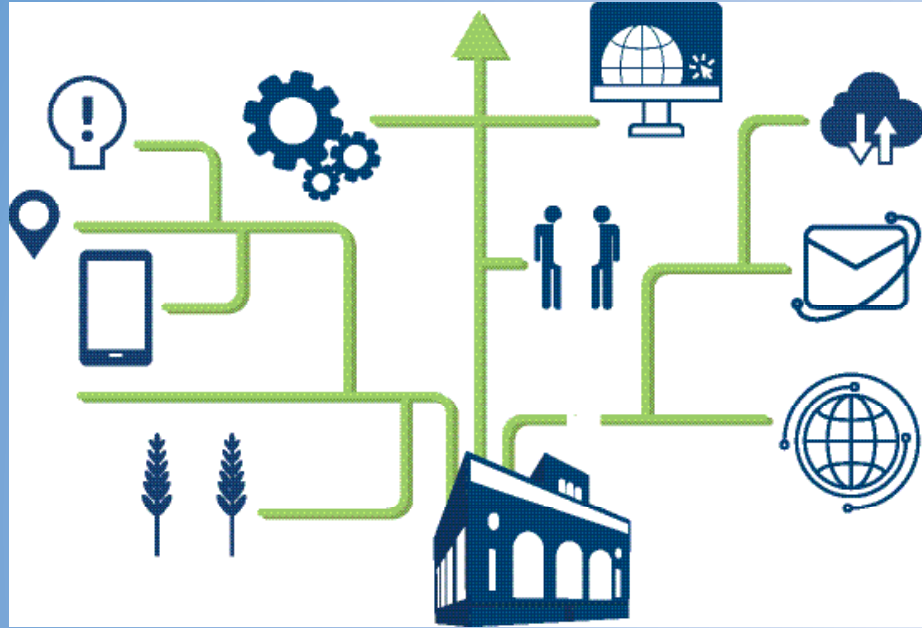


LOCAL GOVERNMENT PACKAGES

From Pro-West & Associates

For many organizations, the most efficient way to implement a location technology solution to fit their needs is with an all-inclusive package. Choose from Pro-West's collection of ready-to-go packages, each containing a unique blend of Pro-West services, to deliver value through location intelligence.



MORE INFORMATION:
Jenny Miller
320-207-6858
jmill@prowestgis.com

PROWEST
& Associates
GIS CONSULTING • DATA SERVICES • APPLICATIONS

SERVICE PACKAGES *Designed For You*

ASSESSORS AND LAND RECORDS PROFESSIONALS

Analyze your data for accuracy, create an environment for efficient data maintenance, take the right training and implement the right web applications to get valuable information to those who need it, in ways it is easily accessed and understood.

Explore this package if you want to: Enhance public trust, confidence and transparency | Minimize appeals | Respond to market conditions | Deliver tax roll on time and accurately | Communicate value notices to the public | Eliminate/minimize data quality issues and silos | Modernize aging business systems | Attract and retain talented staff

Includes: **Data Management & System Integration:** Parcel Fabric Implementation Package including transition to ArcGIS Pro | Business system integration with Tax, CAMA, document imaging, payment systems and more! | Internal management of Equitable Property Value Hub **Citizen Engagement:** Equitable Property Value Hub Package | Land Use Outreach Hub Package **Support:** Block support packages | End-to-End GIS Service Packages

IT AND ENTERPRISE SYSTEMS

Responsible for managing the infrastructure that supports your organization's GIS? Evaluate what you currently have, get up and running efficiently with the right system architecture, and benefit from ongoing support and maintenance that allows you to focus on your core responsibilities.

IT AND ENTERPRISE SYSTEMS (continued)

Includes: Block Support Packages | Enterprise GIS Jumpstart includes support and maintenance | Infrastructure Check-Up | End-to-End GIS Service Packages link to web page

EMERGENCY MANAGERS

Get critical data in order, implement the right processes to maintain it efficiently, and implement solutions that better equip your organization to respond effectively. Block Support Packages | Address Outreach Hub | NG9-1-1 Readiness Package

GIS TEAMS

Add to your capabilities and capacity with a wide range of packages to grow your organization's location strategy, enhance the services you provide to staff and external users, get the most from your investment in GIS software, and have the confidence that support is on hand when you need it most.

Includes: Block Support Packages | Parcel Fabric Implementation Package including transition to ArcGIS Pro | Equitable Property Value Hub Package | Land Use Outreach Hub Package | Address Outreach Hub | Enterprise GIS Jumpstart includes support and maintenance | NG9-1-1 Readiness Package | ArcGIS Hub Implementation Package | Infrastructure Check-Up | End-to-End GIS Service Packages

BLOCK SUPPORT PACKAGES

Value: Need a little or a lot of support? Need assistance that spans multiple types of services, such as data, enterprise, solutions and integration? Want on-demand support from technical leaders? This package may be the best option to meet your needs.

Includes: "Blocks" of GIS professional services support | Different levels available from 20-160 hours | Applicable to any service offered by Pro-West | Valid for 1 year | Cost-effective pricing | One line item for all GIS services you may need | Options to "buy up" or extend packages

PARCEL FABRIC IMPLEMENTATION PACKAGE

Value: Stay ahead by deploying the Parcel Fabric in ArcGIS Pro – whatever your current method of managing parcel data. Enhance citizen engagement and information accessibility.

Includes: Data analysis | System architecture analysis | Data migration | Training and support

EQUITABLE PROPERTY VALUE HUB PACKAGE

Value: Real-time access to solutions and data that answer common property and tax distribution questions. Drive citizen engagement and streamline the assessment appeals process!

Includes: Configuration of the following Esri-based solutions: Equitable Property Value Hub and solutions | Solution configuration and support

ADDRESS OUTREACH HUB

Value: Support diverse location and emergency routing needs through community collaboration to improve addressing and road information.

Includes: Configuration of the following Esri-based solutions: | Address Outreach Manager Hub site | Address Viewer | My Emergency Services | Address Request and Data Manager | Address Crowdsourcing and Data Manager

LAND USE OUTREACH HUB PACKAGE

Value: Share construction activity, and use and zoning regulations to generate awareness about development activity

Includes: Land Use Outreach Hub site | Land Use Inquiry app | Floodplain Inquiry Solution | Construction Activity Tracker | Public Comment solution



ROADS & HIGHWAYS PACKAGE

Value: Share information with the public about construction, closures, or related data on roads and highways.

Includes: Road Closures solution | Current and Planned Construction solution | Bridge Viewer solution | Open Data: bridges, construction, roads and road closures | For Hub Premium users: community calendar and community initiative sign-up

ENTERPRISE GIS JUMPSTART

Value: Provide support with modern sustainable infrastructure with the power to standardize and streamline location technology and workflows, bring location intelligence to all departments, enhance citizen engagement, and share valuable information.

Includes: | System architecture analysis, design and implementation | Training and technical support | Ongoing management and maintenance

NG9-1-1 READINESS PACKAGE

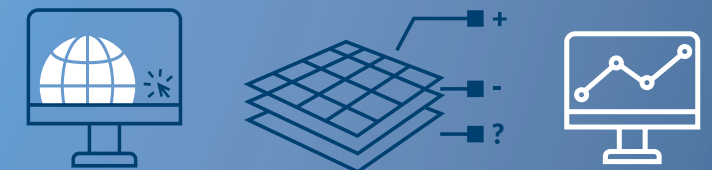
Value: Ensure your organization's 911 GIS data meets readiness deadlines and/or data maintenance requirements, no matter what stage of the NG9-1-1 process you have reached.

Includes: | Strategic planning (gap analysis, data quality reports, and more) | Remediation of data quality issues | Advice on requirements of the state and other systems for 911 | Creation of required datasets | Quality assurance/quality control plans | Custom training

INFRASTRUCTURE CHECK-UP

Value: Make sure your system allows you to take full advantage of GIS capabilities, offers room for growth, and can integrate with other critical business systems.

Includes: | Performance review | Security review | Strategies for scaling | Cloud strategies | Upgrade strategies | System integration | Training and support



END-TO-END GIS SERVICE PACKAGES

Value: For organizations that need to supplement their GIS teams, or that don't have in-house GIS staff, fill the gap with end-to-end GIS services. Benefit from expertise including application development, solution configuration, system integration, and data services.

Includes: | Support to define goals and required services | Defined timeframe and budget to meet goals | Unique set of services built around your GIS goals | Support from experts spanning the GIS spectrum

