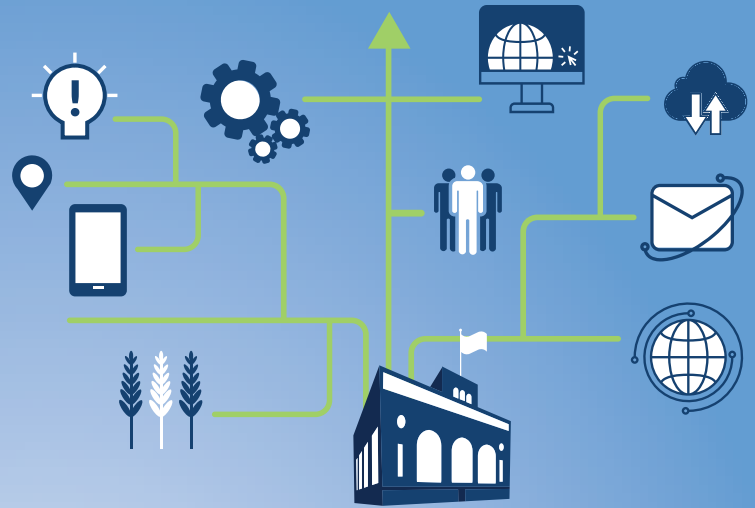


PROWEST & Associates

LOCAL GOVERNMENT PACKAGES From Pro-West & Associates

For many organizations, the most efficient way to implement a location technology solution to fit their needs is with an all-inclusive package. Choose from Pro-West's collection of ready-to-go packages, each containing a unique blend of Pro-West services, to deliver value through location intelligence.



BLOCK SUPPORT PACKAGES

Value: Need a little or a lot of support? Need assistance that spans multiple types of services, such as data, enterprise, solutions and integration? Want on-demand support from technical leaders? This package may be the best option to meet your needs.

Includes: "Blocks" of GIS professional services support | Different levels available from 20-160 hours | Applicable to any service offered by Pro-West | Valid for 1 year | Cost-effective pricing | One line item for all GIS services you may need | Options to "buy up" or extend packages



EQUITABLE PROPERTY VALUE PACKAGE

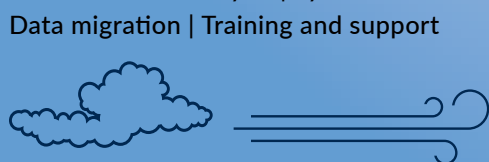
Value: Deliver a set of capabilities to share authoritative property information in a map-based application, modernize customer service, and promote fair and equitable property values.

Includes: ArcGIS Pro project and collection of web applications to inventory and maintain electoral districts, precincts, voting centers, and polling places.

PARCEL FABRIC IMPLEMENTATION PACKAGE

Value: Stay ahead by deploying the Parcel Fabric in ArcGIS Pro – whatever your current method of managing parcel data. Enhance citizen engagement and information accessibility.

Includes: Data analysis | System architecture analysis | Data migration | Training and support



ADDRESS OUTREACH HUB PACKAGE

Value: Support diverse location and emergency routing needs through community collaboration to improve addressing and road information.

Includes: Configuration of the following Esri-based solutions: Address Outreach Manager Hub site | Address Viewer | My Emergency Services | Address Request and Data Manager | Address Crowdsourcing and Data Manager



LAND USE OUTREACH HUB PACKAGE

Value: Share construction activity, land use and zoning regulations to generate awareness about development activity

Includes: Land Use Outreach Hub site | Land Use Inquiry app | Floodplain Inquiry Solution | Construction Activity Tracker | Public Comment solution

ROADS & HIGHWAYS PACKAGE

Value: Share information with the public about construction, closures, or related data on roads and highways.

Includes: Road Closures solution | Current and Planned Construction solution | Bridge Viewer solution | Open Data: bridges, construction, roads and road closures | For Hub Premium users: community calendar and community initiative sign-up



ENTERPRISE GIS JUMPSTART PACKAGE

Value: Provide support with modern sustainable infrastructure with the power to standardize and streamline location technology and workflows, bring location intelligence to all departments, enhance citizen engagement, and share valuable information.

Includes: System architecture analysis, design and implementation | Training and technical support | Ongoing management and maintenance



INFRASTRUCTURE CHECK-UP PACKAGE

Value: Make sure your system allows you to take full advantage of GIS capabilities, offers room for growth, and can integrate with other critical business systems.

Includes: | Performance review | Security review | Strategies for scaling | Cloud strategies | Upgrade strategies | System integration | Training and support



NG9-1-1 READINESS PACKAGE

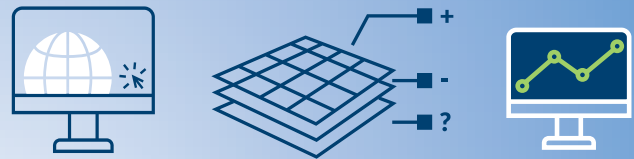
Value: Ensure your organization's 911 GIS data meets readiness deadlines and/or data maintenance requirements, no matter what stage of the NG9-1-1 process you have reached.

Includes: Strategic planning (gap analysis, data quality reports, and more) | Remediation of data quality issues | Advice on requirements of the state and other systems for 911 | Creation of required datasets | Quality assurance/quality control plans | Custom training

END-TO-END GIS SERVICE PACKAGES

Value: For organizations that need to supplement their GIS teams, or that don't have in-house GIS staff, fill the gap with end-to-end GIS services. Benefit from expertise including application development, solution configuration, system integration, and data services.

Includes: Support to define goals and required services | Defined time frame and budget to meet goals | Unique set of services built around your GIS goals | Support from experts spanning the GIS spectrum



ASSET MANAGEMENT PACKAGE

Value: Inventory assets and keep information up-to-date by providing easy-to-use interactive maps and apps for office and field staff. Quickly deploy ArcGIS Solutions to record, update and track information about your assets in real time, on a standard platform.

Includes: Esri software licensing, configuration of 2 ArcGIS Online solutions, Asset Management Hub site, data upload for chosen solutions, training and professional services support



PUBLIC OUTREACH PACKAGE

Value: Engage with citizens by providing up-to-date information in a way that is easy to access and understand. Efficiently share information on evolving situations, reduce in-person requests for property records, and much more with easy-to-use, hosted, mobile-friendly web maps and apps.

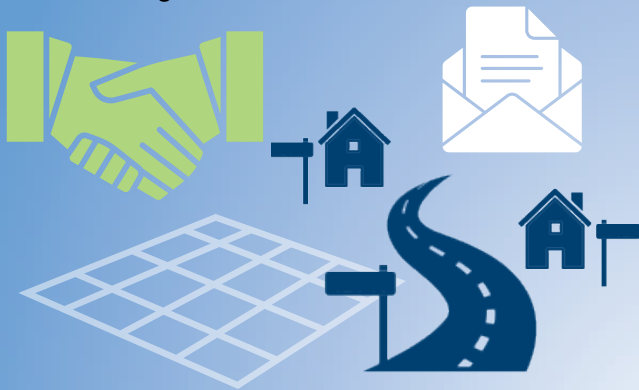
Includes: Esri software licensing, configuration of 2 ArcGIS Online solutions, Citizen Engagement Hub site, data upload for chosen solutions, training and professional services support



ADDRESS DATA MANAGEMENT PACKAGE

Value: Maintain an authoritative address repository, continuously improve the quality of address data, and share address information with internal and external stakeholders.

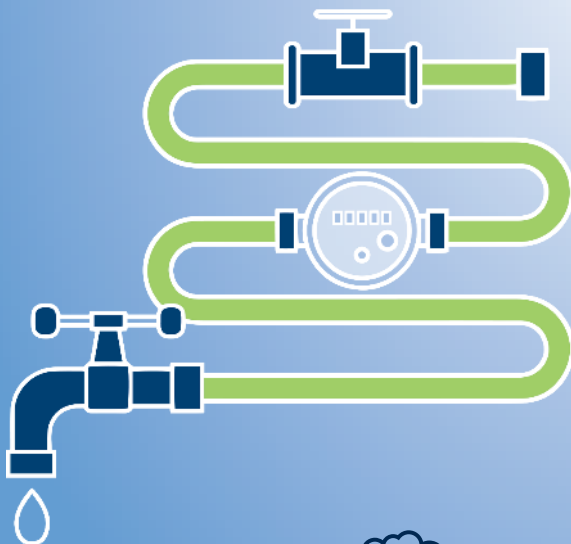
Includes: ArcGIS Pro project used to maintain an inventory of road centerlines, valid road names, site addresses, and related mailing addresses.



WATER UTILITY DATA MANAGEMENT PACKAGE

Value: Map sewer system, stormwater system, and water distribution assets, edit data, view system maps in the field and office, view asset reports, and collaborate with map notes.

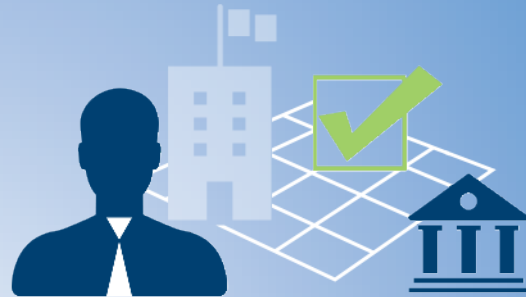
Includes: ArcGIS Pro project and collection of web applications to manage system and distribution data and map notes.



ELECTION OUTREACH PACKAGE

Value: Educate the public and help voters find an appropriate voting center or Election Day polling place.

Includes: ArcGIS Pro project and collection of web applications to inventory and maintain electoral districts, precincts, voting centers, and polling places.



ROADWAY MANAGEMENT PACKAGE

Value: Inventory public roads and their characteristics, conduct routine pavement condition assessments, and streamline inspection and maintenance activities.

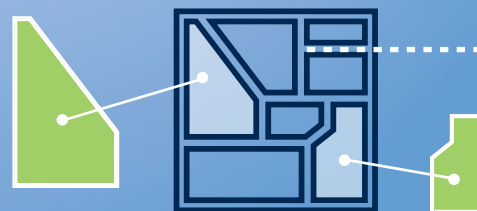
Includes: ArcGIS Pro project and collection of web applications to maintain an inventory of roads and their physical characteristics, pavement markings, guardrails, and traffic calming devices.



PARCEL MAINTENANCE PACKAGE

Value: Fill a resourcing gap or simply receive assurance that parcel updates will be performed on time, every time. Plans available for daily, weekly, monthly or quarterly maintenance.

Includes: Services to perform parcel updates including splits, merges, new subdivisions, lot line adjustments and right of way.



RECORDERS AND LAND RECORDS PROFESSIONALS

Analyze your data for accuracy, create an environment for efficient data maintenance, take the right training and implement the right web applications to get valuable information to those who need it, in ways it is easily accessed and understood.

This package includes:

- ✓ Parcel Fabric Implementation Package
- ✓ Parcel Maintenance Package
- ✓ Equitable Property Value Package
- ✓ Block Support Packages
- ✓ Land Use Outreach Hub Package
- ✓ End-to-End GIS Service Packages
- ✓ Public Outreach Package
- ✓ Equitable Property Value Package
- ✓ Parcel Maintenance Package



IT AND ENTERPRISE SYSTEMS

Responsible for managing the infrastructure that supports your organization's GIS? Evaluate what you currently have, get up and running efficiently with the right system architecture, and benefit from ongoing support and maintenance that allows you to focus on your core responsibilities. This package includes:

- ✓ Block Support Packages
- ✓ Enterprise GIS Jumpstart Package
- ✓ Infrastructure Check-Up Package
- ✓ End-to-End GIS Service Packages

GIS TEAMS

Add to your capabilities and capacity with a wide range of packages to grow your organization's location strategy, enhance the services you provide to staff and external users, get the most from your investment in GIS software, and have the confidence that support is on hand when you need it most. This package includes:

- ✓ Block Support Packages
- ✓ Address Outreach Hub Package
- ✓ Enterprise GIS Jumpstart Package
- ✓ Infrastructure Check-Up Package
- ✓ NG9-1-1 Readiness Package
- ✓ End-to-End GIS Service Packages
- ✓ Parcel Fabric Implementation Package
- ✓ Equitable Property Value Hub Package
- ✓ Land Use Outreach Hub Package
- ✓ ArcGIS Hub Implementation Package
- ✓ Address Data Management Package
- ✓ Equitable Property Value Package
- ✓ Water Utility Data Management Package
- ✓ Election Outreach Package
- ✓ Roadway Management Package
- ✓ Parcel Maintenance Package



PUBLIC WORKS

Transform your asset management and maintenance workflows by leveraging GIS solutions. Migrate processes from paper to digital formats, empower field workers with asset data at their fingertips and improve efficiency throughout the department. This package includes:

- ✓ Block Support Packages
- ✓ Asset Management Package
- ✓ Roads & Highways Package
- ✓ Citizen Engagement Package
- ✓ Address Data Management Package
- ✓ Water Utility Data Management Package
- ✓ Roadway Management Package

EMERGENCY MANAGERS

Get critical data in order, implement the right processes to maintain it efficiently, and implement solutions that better equip your organization to respond effectively.

This package includes:

- ✓ NG9-1-1 Readiness Package
- ✓ Block Support Packages
- ✓ Address Outreach Hub Package
- ✓ Address Data Management Package

